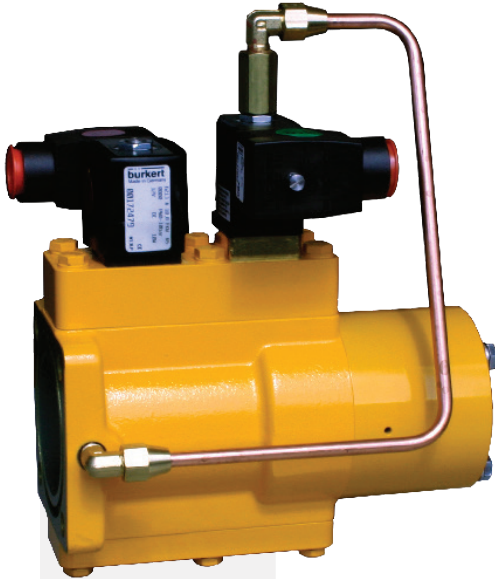




E-7 Valve

Electronic Two-Stage Preset Valve



Benefits

- Easier installation
- Faster response time
- Less maintenance

Features

- Indexible design for 90° rotational adjustment of valve outlet.
- Interchangeability (same mounting dimensions) with the V-7 and K-7 mechanical valves.
- Two-stage operation for preset deliveries.
- Fast response for quick valve shut-off.

General Information

The Liquid Controls E-7 Electronic, Two-Stage, Preset Valve is designed for refined fuel applications including gasoline, gasohol, diesel fuel, and fuel oil. The valve is available as part of a complete, new metering system with electronic registration or as a retrofit when upgrading from mechanical to electronic registration. The E-7 valve may be used with M5, M7, and M10 Class 1 meters.

The E-7 Series electronically-actuated piston valve is mounted on the meter outlet and provides a compact installation. The valve is operated by two solenoids. These solenoids control two-stage closure with a dwell period to eliminate hydraulic shock.

The valve solenoids are wired to a Liquid Controls LectroCount Electronic Register and are controlled by the register software. During a delivery, the valve opens to allow full flow through the meter. For preset deliveries, the full flow solenoid de-energizes at the point where dwell flow is activated. This reduces the flow rate through the meter. Once the delivery preset volume is reached, the valve fully closes without hydraulic shock to the system.





E-7 Valve

Specifications

Temperature Rating

-40° to 160°F (-40° to 71°C)

Pressure Rating

Maximum non-shock working pressure

150 PSI (10.3 BAR)

Maximum differential pressure

100 PSI (6.9 BAR)

Environmental Rating

NEMA 4X

Flow Range

150 GPM (568 L/min) for 30 SSU products

Viscosity Range

30 to 100 SSU

Products

CLASS 1 Refined Fuels

Gasoline, gasohol, diesel fuel, and fuel oil

CLASS 2 Aviation

Avgas and jetfuel

Safety

Designed to meet Class I, Division 2 requirements

Materials of Construction

CLASS 1

Valve Body: Aluminum

Elastomers: Viton O-rings, PTFE Seal, Acetal Wear Rings

CLASS 2

Valve Body: Anodized Aluminum

Elastomers: Viton O-rings, PTFE Seal, Acetal

Wear Rings

Pilot Control System

CLASS 1

Brass solenoids and fittings with flared copper tubing

CLASS 2

Stainless steel solenoids and fittings with flared stainless steel tubing

Solenoids

Voltage: +10.2 to 13.6 VDC

+20.4 to 27.2 VDC optional

Current: S1: 1 A

S2: 2 A max

Two-Stage Operation

Minimum recommended volume for trickle stage flow

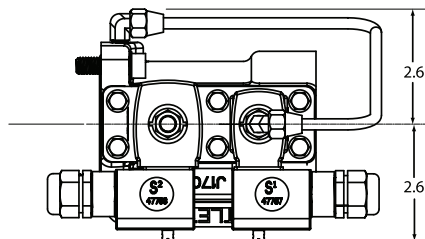
M5 Meters: 6 gallons (23 litres)

M7 Meters: 10 gallons (38 litres)

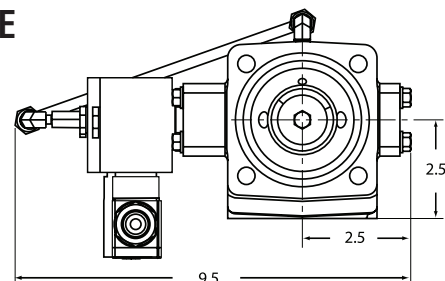
M10 Meters: 15 gallons (57 litres)

Dimensions

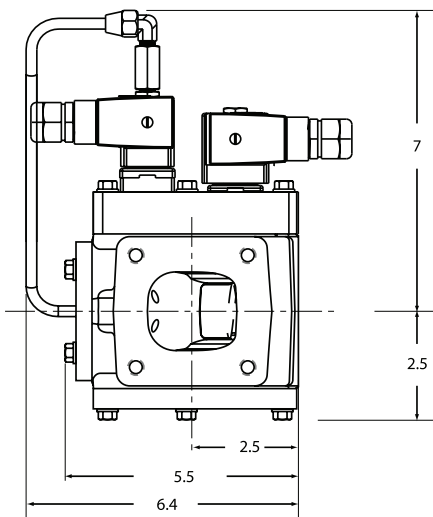
FRONT



SIDE



BOTTOM



Dimensions shown are not for construction use. Consult factory when certified engineering drawings are required.

